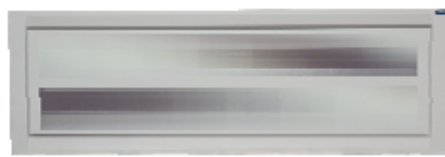


Chilled beam



High quality standard at the touch of your hand



- 7 lengths: 1200-3000 mm (step 300 mm)
- width 600 mm
- height 200 mm
- 2-pipe or 4-pipe system
- cooling and heating systems
- active chilled beam
- for installation into suspended ceilings
- easy installation
- front plate with round perforation
- opening of the front plate possible

Chilled beam

Application and operation :

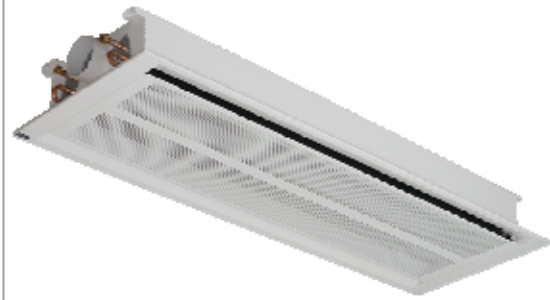
Chilled beam is a modern device for cooling and heating of business premises, hotels, public buildings. They are used for building cooling and secondary heating of rooms in the combination with floor heating or other devices. They are convenient for all modern buildings, where directives for good buildings insulation and quality materials were considered by designing and building.

Types, design, sizes :

- 2-pipe and 4-pipe cooling and heating systems,
- installation into suspended ceilings,
- 7 lengths, width 600 mm (exact width 593) and height 200 mm.

Basic characteristics :

- cooling capacity 620 W/m,
- heating capacity 980 W/m,
- quiet operation (no turning parts),
- regulation possible,
- visible part is standard painted in RAL 9010, other colours in RAL scale colour upon customers request are possible,
- front plate is perforated in a round shape (other shapes of perforation possible),
- easy installation and maintenance.



Hidria IMP Klima d.o.o.
Godovič 150, 5275 Godovič
Slovenia
T: +386 5 37 43 000
F: +386 5 37 43 082
E: klima@hidria.com
www.hidria.com