

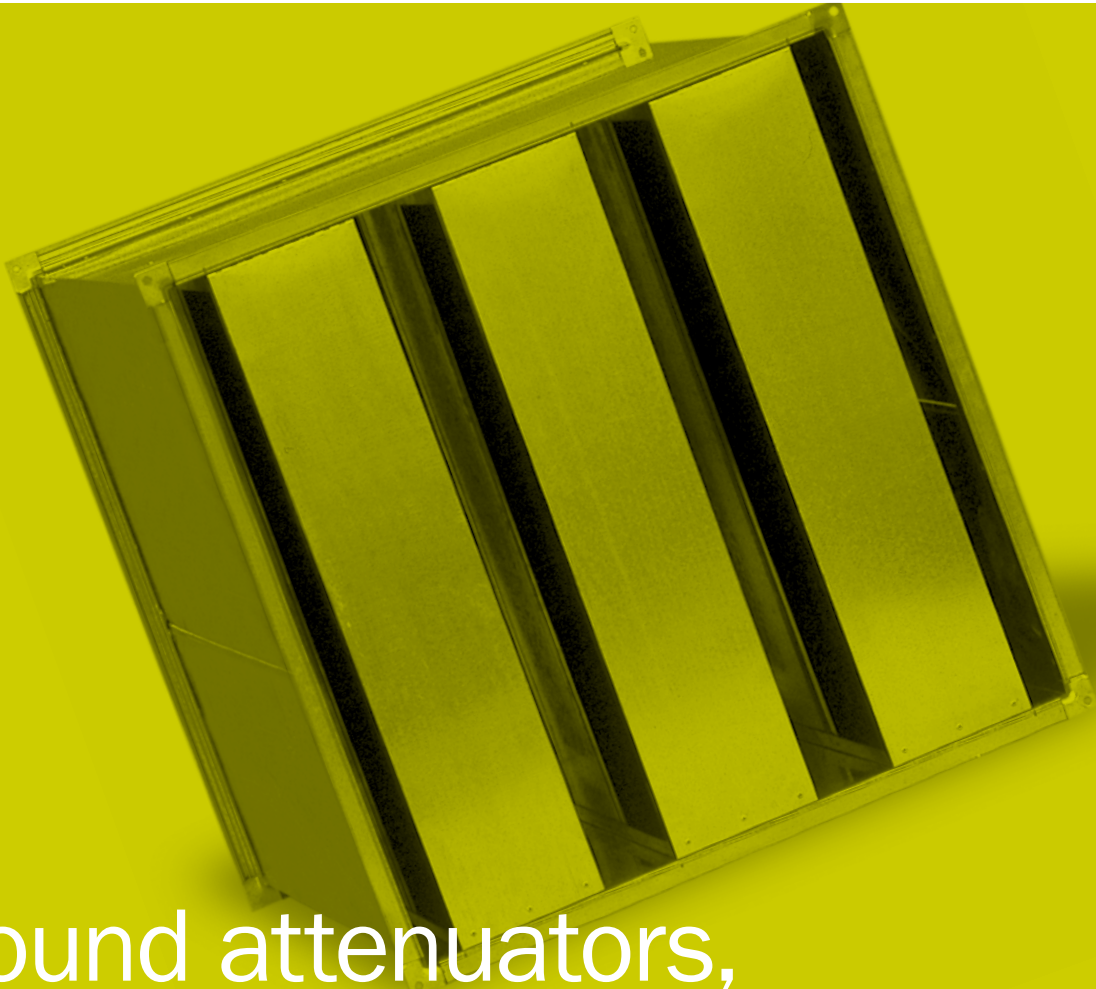
09



Sound attenuators



Sound attenuating
louvres



Sound attenuators, Sound attenuating louvres

Sound attenuators are designed to attenuate fan and air-conditioning device noises in ventilation ducts, and to prevent propagation of noise between rooms.

- VENTILATING GRILLES,
VENTILATING VALVES
- CIRCULAR DIFFUSERS,
SQUARE DIFFUSERS
- SWIRL DIFFUSERS,
VARIABLE SWIRL DIFFUSERS
- SLOT DIFFUSERS,
ROUND DUCT DIFFUSERS
- AIR DISPLACEMENT
UNITS
- SUPPLY AIR NOZZLES
- EXTERNAL ELEMENTS
- AIR REGULATION UNITS
- SOUND ATTENUATORS,
SOUND ATTENUATING
LOUVRES**

Overview

■ Sound attenuators

Sound attenuators are designed to attenuate fan and air-conditioning device noises in ventilation ducts, and to prevent propagation of noise between rooms.

Sound attenuators DZ-2 and DZ-3

DZ-2 sound attenuators field of application is the attenuation of fan noise in ventilation and air-conditioning installations. They provide very efficient attenuation in the 250 Hz octave band. K-2 splitters built in these attenuators consist of alternant layers of absorbing material and galvanised steel sheet membranes.

DZ-3 sound attenuators field of application comprises attenuation of industrial machinery noises and special applications in air-conditioning systems. They provide very efficient attenuation in the 500 to 4000 Hz frequency range. K-3 splitters built in these attenuators have their entire surface made of absorbing material.

Round sound attenuators ODZ-1

ODZ-1 round sound attenuators are applied in ventilation and air-conditioning systems for attenuation of fan noises. They are suitable for installation in either inlet or outlet pipes of axial fans, in inlet pipes of radial fans, or installation in circular cross-section ducts.

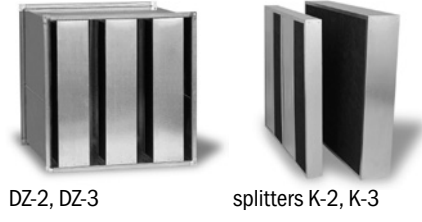
Round sound attenuators MDZ-50

MDZ-50 round sound attenuators prevent propagation of noise between rooms through ventilation ducts.

■ Sound attenuating louvres

Steel attenuating louvres JAR are designed to prevent ingress of outside noises into the building interior, or propagation of noises from the building into the environment, through supply or exhaust openings. In addition to their acoustic protection function, they also serve as conventional protection louvres.

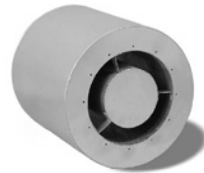
Rectangular sound attenuators DZ-2, DZ-3



DZ-2, DZ-3

splitters K-2, K-3

Round sound attenuators ODZ-1



ODZ-1

Round sound attenuators MDZ-50



MDZ-50

Sound attenuating louvres JAR



JAR

Content

	Page
SOUND ATTENUATORS	340
Rectangular sound attenuators DZ-2, DZ-3	340
Circular sound attenuators ODZ-1	352
Circular sound attenuators MDZ-50	355
SOUND ATTENUATING LOUVRES	357
Sound attenuating louvres JAR	357

VENTILATING GRILLES,
VENTILATING VALVES

CIRCULAR DIFFUSERS,
SQUARE DIFFUSERS

SWIRL DIFFUSERS,
VARIABLE SWIRL DIFFUSERS

SLOT DIFFUSERS,
ROUND DUCT DIFFUSERS

AIR DISPLACEMENT
UNITS

SUPPLY AIR NOZZLES

EXTERNAL ELEMENTS

AIR REGULATION UNITS

SOUND ATTENUATORS,
SOUND ATTENUATING
LOUVRES

Sound attenuators

■ Rectangular sound attenuators DZ-2 in DZ-3

Application

Sound attenuators are designed to attenuate noises of fans and air-conditioning devices in ventilation and air-conditioning installations. Noise has a strong negative impact on working efficiency and general feeling of occupants. Damages to the central nervous system, deafness and other ailments are threats to persons working in noisy environments.

Application of sound attenuator DZ-2

DZ-2 sound attenuators are designed to attenuate fan noises in ventilation and air-conditioning systems. Based on numerous practical calculations it has been established that the said systems require maximum sound attenuation in the 250 Hz octave band. The sound attenuation performances of the DZ-2 sound attenuators with built-in K-2 attenuation splitters are far superior to those of classical absorption attenuators with equal length and width of splitters and equal splitter pattern pitch. In other frequency bands, attenuation performances of the DZ-2 attenuators are also well adapted to ventilation and air-conditioning systems acoustic requirements.

Application of sound attenuator DZ-3

DZ-3 sound attenuators are suitable to attenuate industrial machinery noises and for special applications in the air-conditioning engineering. DZ-3 sound attenuators provide very efficient attenuation in the 500 to 4000 Hz frequency range.

Description

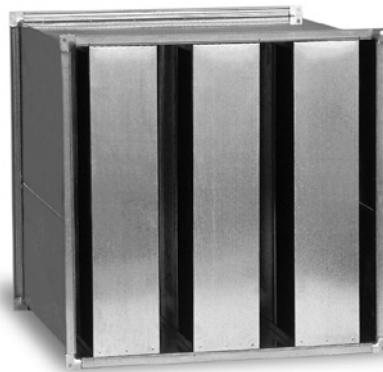
The attenuator housing is made of galvanised sheet steel. The housing connecting flanges are made of galvanised rolled steel quick-coupling elements with 30 mm edges, joined by means of angle pieces. Splitters with frames of galvanised sheet steel and filling of highly efficient absorption material are built into the housing. Filling exposed surface is protected with cellulose foil. They are designed to be incombustible. Contrary to K-3 splitters, the filling of K-2 attenuation splitters is partly covered with galvanised sheet steel strips. Strips of galvanised sheet steel or cellulose foil run along the splitter length L . Hence, the K-2 attenuator splitter height H and length L are not interchangeable. The splitter L dimension shall always run in the direction of propagation of sound.

Dimensions

Attenuator sizes are determined by use of the "Klima DZ" computer program in accordance with the customer's requirements. Splitters alone can also be delivered. All sound attenuator sizes are derived from the unit modular length $R=250$ mm. All sound attenuator model lengths and heights are multiples of the said R modular length, which allows economical and low-cost production.

Determination of adequate attenuator

Splitter thickness $d=100$ mm is suitable for smaller air flow rates as well as in the cases where high degree attenuation is required in the high frequency range. Splitter thickness $d=200$ mm is suitable for large air flow rates as well as in the cases where high degree attenuation is required in the low frequency range. The computer program automatically calculates the required distance (s) between splitters. In comparison with standard cellulose foil lining design, the noise attenuation capacity of splitters with polyethylene foil lining is



K-2



K-3





inferior. The differences are observed in the frequency range from 500 Hz up. Attenuation capacities are reduced as follows:

	500 Hz	1000 Hz	2000 Hz	4000 Hz	8000 Hz
ΔD	14 %	36 %	50 %	50 %	50 %

Permissible air velocities across splitters

With the standard version-outer filling surface protected with cellulose foil or sheet steel plates - air velocities of up to 20 m/s are permissible. By installing a perforated galvanised steel sheet in front of the cellulose foil, this upper limit can be increased to 30 m/s. In conditions of dusty or damp air, cellulose foil lining shall be supplemented by polyethylene protection foil and a protection screen. This latter design can sustain air velocities of up to 30 m/s.

Temperature range

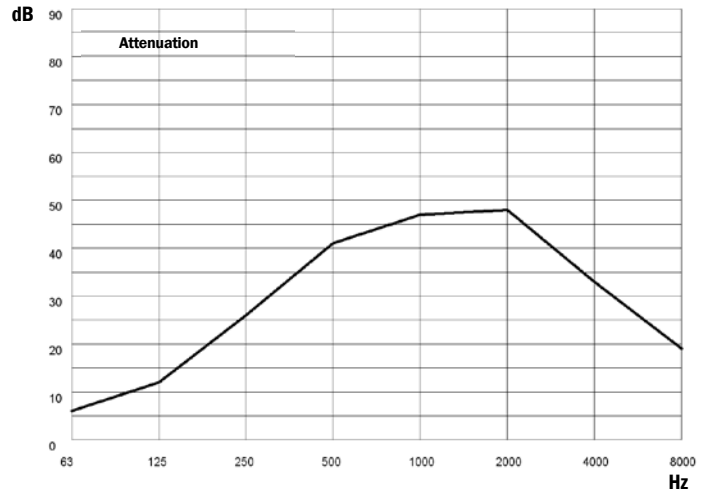
- standard version: up to 100 °C,
- when protected with polyethylene foil and screen: up to 80 °C.

Attenuation capacities

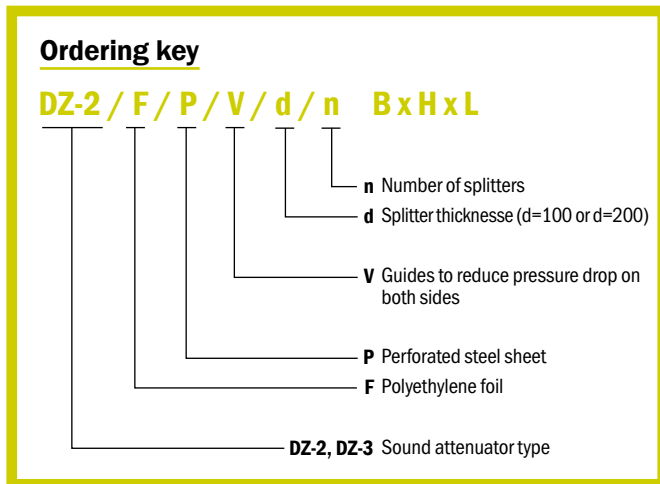
Attenuation capacities are measured in our in-house laboratory. In cases where the required attenuation rates exceed the capacities achievable with attenuators of sizes limited by installation constraints, several attenuators may be installed in series. However, because of lateral sound propagation (through the attenuator housing and splitter frame), attenuation rates exceeding 40 dB, across the entire frequency spectrum, can not be achieved by means of a single attenuator. Higher attenuation rates can only be achieved by adding another attenuator - located as far away as possible from the first one.

Caution

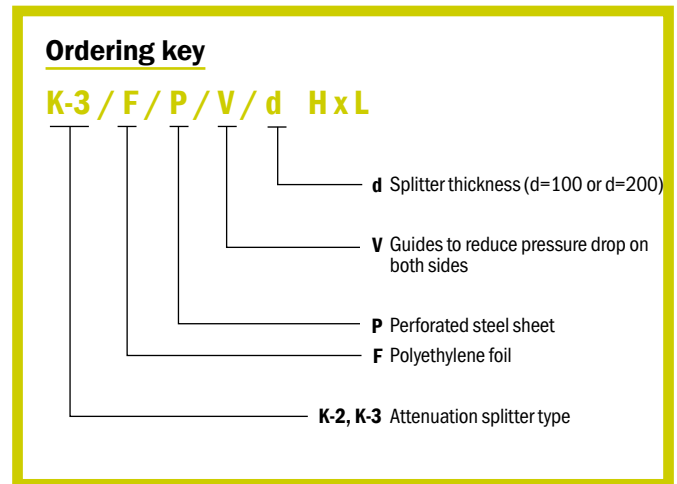
When installing attenuator splitters in different ducts, ensure that the duct height does not exceed the height of splitters. Any gap between the duct walls and splitters shall be packed, otherwise noise can freely bypass the silencer without attenuation.



Sound attenuators



Attenuation splitters



SOUND ATTENUATORS, SOUND ATTENUATING LOUVRES
 AIR REGULATION UNITS
 EXTERNAL ELEMENTS
 SUPPLY AIR NOZZLES
 AIR DISPLACEMENT UNITS
 SLOT DIFFUSERS, ROUND DUCT DIFFUSERS
 VARIABLE SWIRL DIFFUSERS
 SWIRL DIFFUSERS, SQUARE DIFFUSERS
 CIRCULAR DIFFUSERS, SQUARE DIFFUSERS
 VENTILATING GRILLES, VENTILATING VALVES

Sound attenuation capacity D (dB) determination table

TYPE: DZ-2; d=100 mm

Attenuator length **L=500**

Frequency (Hz)	Distance between attenuation splitters s (mm)							
	30	40	50	60	70	80	90	100
63	6	5	3	3	3	2	2	2
125	10	9	7	5	5	5	5	5
250	14	12	10	9	8	7	7	7
500	20	18	16	15	12	12	12	11
1000	25	22	20	18	16	14	13	12
2000	29	25	21	19	16	12	11	10
4000	20	18	17	16	13	10	9	8
8000	15	13	11	10	9	8	8	7

Attenuator length **L=2000**

Frequency (Hz)	Distance between attenuation splitters s (mm)							
	30	40	50	60	70	80	90	100
63	13	12	9	9	9	8	5	5
125	23	21	18	16	15	12	11	11
250	47	42	35	30	27	27	26	25
500	50	50	50	44	43	43	42	42
1000	50	50	50	50	49	49	46	44
2000	50	50	50	50	47	35	29	27
4000	46	41	37	35	33	28	26	24
8000	34	30	27	24	21	18	17	16

Attenuator length **L=1000**

Frequency (Hz)	Distance between attenuation splitters s (mm)							
	30	40	50	60	70	80	90	100
63	6	5	5	5	5	3	3	3
125	13	12	10	9	9	8	7	7
250	25	23	19	16	13	13	13	13
500	35	32	28	25	22	21	21	20
1000	41	37	34	31	28	26	24	23
2000	41	37	33	30	27	18	17	16
4000	28	25	23	22	19	16	15	14
8000	20	18	17	16	14	13	11	10

Attenuator length **L=2500**

Frequency (Hz)	Distance between attenuation splitters s (mm)							
	30	40	50	60	70	80	90	100
63	13	12	11	11	11	9	8	8
125	24	22	19	18	16	14	14	13
250	50	50	42	38	34	34	34	30
500	50	50	50	50	48	47	45	44
1000	50	50	50	50	50	50	50	50
2000	50	50	50	50	50	37	35	33
4000	50	50	48	43	40	34	31	27
8000	35	32	28	28	25	25	21	18

Attenuator length **L=1500**

Frequency (Hz)	Distance between attenuation splitters s (mm)							
	30	40	50	60	70	80	90	100
63	8	7	7	7	7	5	3	4
125	19	17	14	12	12	11	10	9
250	36	32	27	23	20	20	20	19
500	50	47	40	35	32	31	31	30
1000	50	50	49	45	43	37	35	33
2000	50	50	45	41	38	24	22	21
4000	38	33	30	28	26	21	20	18
8000	27	24	22	20	18	17	15	13

Attenuator length **L=3000**

Frequency (Hz)	Distance between attenuation splitters s (mm)							
	30	40	50	60	70	80	90	100
63	13	12	11	11	11	12	12	12
125	23	22	20	19	18	15	15	14
250	50	50	50	45	39	38	37	36
500	50	50	50	50	50	50	50	50
1000	50	50	50	50	50	50	50	50
2000	50	50	50	50	50	50	39	38
4000	50	50	50	50	46	39	35	30
8000	35	33	31	30	29	28	25	20

Sound attenuation capacity D (dB) determination table

TYPE: DZ-2; d=200mm

Attenuator length L=500

Frequency (Hz)	Distance between attenuation splitters s (mm)							
	60	80	100	120	140	160	180	200
63	4	3	3	3	3	2	2	2
125	8	7	7	4	3	3	3	3
250	16	13	11	9	8	7	7	6
500	18	15	13	11	8	7	7	6
1000	18	15	14	10	9	8	8	7
2000	15	12	10	9	8	7	6	6
4000	16	13	8	9	8	8	7	7
8000	13	11	7	8	7	7	6	6

Attenuator length L=1000

Frequency (Hz)	Distance between attenuation splitters s (mm)							
	60	80	100	120	140	160	180	200
63	6	5	5	3	3	3	2	2
125	14	12	11	9	8	7	7	6
250	25	22	21	17	15	14	13	12
500	30	26	22	18	16	15	13	12
1000	28	24	22	17	15	13	11	10
2000	23	20	16	13	11	10	9	8
4000	19	17	13	12	10	9	9	8
8000	16	14	11	9	8	8	7	7

Attenuator length L=1500

Frequency (Hz)	Distance between attenuation splitters s (mm)							
	60	80	100	120	140	160	180	200
63	8	7	7	5	5	5	3	3
125	19	17	16	14	13	12	11	9
250	38	33	30	26	22	20	18	17
500	42	37	31	27	24	21	18	17
1000	39	34	31	24	20	17	15	13
2000	31	27	21	17	16	13	12	11
4000	25	22	18	15	14	13	12	10
8000	22	19	16	13	11	11	9	8

Attenuator length L=2000

Frequency (Hz)	Distance between attenuation splitters s (mm)							
	60	80	100	120	140	160	180	200
63	10	9	9	7	5	5	5	5
125	24	21	20	18	16	15	14	13
250	47	42	39	34	30	27	25	23
500	50	46	41	35	31	28	25	23
1000	49	43	40	30	25	21	18	16
2000	38	34	26	22	19	17	15	14
4000	30	27	22	19	16	15	14	13
8000	26	23	20	15	13	12	11	9

Attenuator length L=2500

Frequency (Hz)	Distance between attenuation splitters s (mm)							
	60	80	100	120	140	160	180	200
63	11	10	10	8	7	7	5	5
125	29	25	24	21	19	18	17	16
250	50	49	48	41	37	33	31	28
500	50	50	50	43	38	34	30	28
1000	49	43	43	37	30	25	21	18
2000	45	39	30	25	23	20	17	17
4000	36	31	24	21	19	17	16	15
8000	30	26	22	18	15	14	13	12

Attenuator length L=3000

Frequency (Hz)	Distance between attenuation splitters s (mm)							
	60	80	100	120	140	160	180	200
63	13	12	10	8	8	7	7	5
125	33	29	28	24	21	20	19	18
250	50	50	50	48	43	39	36	33
500	50	50	50	50	44	40	35	32
1000	50	44	43	43	34	29	23	20
2000	50	44	34	29	25	23	20	18
4000	40	35	27	23	21	20	19	17
8000	33	29	24	20	18	15	14	13

Sound attenuation capacity D (dB) determination table

TYPE: DZ-3; d=100 mm

Attenuator length **L=500**

Frequency (Hz)	Distance between attenuation splitters s (mm)							
	30	40	50	60	70	80	90	100
63	2	2	2	2	1	1	1	1
125	5	4	4	4	3	3	2	2
250	9	8	7	7	6	6	5	5
500	18	15	13	12	11	11	10	10
1000	35	30	26	25	24	22	21	20
2000	46	42	32	30	28	26	23	20
4000	41	36	26	24	21	18	15	13
8000	30	26	17	15	14	12	10	8

Attenuator length **L=2000**

Frequency (Hz)	Distance between attenuation splitters s (mm)							
	30	40	50	60	70	80	90	100
63	10	9	8	7	6	5	4	4
125	14	11	9	9	8	8	5	5
250	33	30	27	25	23	20	17	14
500	50	48	43	40	39	37	35	34
1000	50	50	50	50	50	50	50	50
2000	50	50	50	50	50	50	50	50
4000	50	50	50	50	50	50	47	42
8000	45	40	38	36	33	30	27	23

Attenuator length **L=1000**

Frequency (Hz)	Distance between attenuation splitters s (mm)							
	30	40	50	60	70	80	90	100
63	6	5	4	3	3	2	2	2
125	10	8	6	5	4	4	3	3
250	22	17	13	12	12	10	8	7
500	34	29	23	22	21	20	19	18
1000	41	39	37	35	34	33	31	30
2000	50	46	44	42	39	36	34	32
4000	45	37	35	32	29	27	24	23
8000	36	29	24	21	18	16	14	13

Attenuator length **L=2500**

Frequency (Hz)	Distance between attenuation splitters s (mm)							
	30	40	50	60	70	80	90	100
63	11	10	9	8	7	6	6	5
125	18	14	11	11	10	8	7	6
250	41	38	33	29	26	22	20	18
500	50	49	47	40	32	29	26	21
1000	50	50	50	50	50	46	40	36
2000	50	50	50	50	50	50	50	50
4000	50	50	50	50	50	50	50	48
8000	50	46	42	40	38	36	33	28

Attenuator length **L=1500**

Frequency (Hz)	Distance between attenuation splitters s (mm)							
	30	40	50	60	70	80	90	100
63	8	7	6	6	5	4	3	3
125	10	9	7	6	5	5	4	4
250	28	24	20	18	16	14	12	10
500	46	39	33	32	30	28	26	25
1000	50	48	47	46	44	43	42	40
2000	50	50	50	50	50	47	46	44
4000	50	47	45	43	41	39	35	33
8000	36	33	31	30	29	24	20	18

Attenuator length **L=3000**

Frequency (Hz)	Distance between attenuation splitters s (mm)							
	30	40	50	60	70	80	90	100
63	12	12	10	9	9	7	7	6
125	20	20	19	18	15	13	9	8
250	48	44	39	32	28	23	18	10
500	50	50	50	43	39	33	26	18
1000	50	50	50	50	48	45	42	36
2000	50	50	50	50	50	50	50	50
4000	50	50	50	50	50	50	50	50
8000	48	46	44	42	40	39	36	33



Sound attenuation capacity D (dB) determination table

TYPE: DZ-3; d=200mm

Attenuator length **L=500**

Frequency (Hz)	Distance between attenuation splitters s (mm)							
	60	80	100	120	140	160	180	200
63	3	2	2	2	2	1	1	1
125	5	5	5	4	4	3	2	2
250	11	10	9	8	7	6	6	6
500	20	17	16	14	13	11	10	9
1000	27	25	23	19	17	13	13	12
2000	26	24	20	18	15	12	11	10
4000	18	16	14	12	10	8	7	6
8000	12	11	10	8	7	6	5	5

Attenuator length **L=2000**

Frequency (Hz)	Distance between attenuation splitters s (mm)							
	60	80	100	120	140	160	180	200
63	9	8	8	7	6	4	4	3
125	15	14	13	13	12	11	10	10
250	38	34	30	27	24	21	20	18
500	50	50	50	47	45	42	40	39
1000	50	50	50	50	50	47	46	45
2000	50	50	50	47	43	37	35	34
4000	38	37	36	32	28	24	22	19
8000	26	24	22	20	17	13	12	11

Attenuator length **L=1000**

Frequency (Hz)	Distance between attenuation splitters s (mm)							
	60	80	100	120	140	160	180	200
63	4	4	4	3	3	2	2	2
125	10	9	8	8	7	6	6	5
250	19	18	17	15	14	13	12	11
500	31	30	29	26	25	22	20	18
1000	38	36	34	32	30	27	25	24
2000	37	35	32	27	24	20	18	16
4000	28	26	23	18	17	14	13	12
8000	18	16	14	13	12	9	8	7

Attenuator length **L=2500**

Frequency (Hz)	Distance between attenuation splitters s (mm)							
	60	80	100	120	140	160	180	200
63	10	9	8	8	7	5	5	4
125	19	17	15	14	13	12	11	11
250	42	40	37	33	30	25	23	22
500	50	50	50	50	50	48	47	46
1000	50	50	50	50	50	49	48	47
2000	50	50	50	50	48	45	42	40
4000	45	43	38	34	33	27	24	22
8000	30	27	23	21	19	16	14	12

Attenuator length **L=1500**

Frequency (Hz)	Distance between attenuation splitters s (mm)							
	60	80	100	120	140	160	180	200
63	7	6	6	5	4	3	2	2
125	13	12	11	10	9	8	7	6
250	27	26	23	22	19	17	17	16
500	44	41	38	36	34	31	29	28
1000	48	47	44	42	40	36	34	33
2000	49	48	42	37	33	27	26	24
4000	35	33	28	26	23	17	15	13
8000	22	19	18	16	14	12	10	9

Attenuator length **L=3000**

Frequency (Hz)	Distance between attenuation splitters s (mm)							
	60	80	100	120	140	160	180	200
63	12	11	10	10	8	6	5	4
125	21	19	17	16	15	13	12	11
250	48	45	42	38	35	30	27	26
500	50	50	50	50	50	50	50	49
1000	50	50	50	50	50	50	50	50
2000	50	50	50	50	50	50	49	46
4000	50	50	43	40	38	29	26	23
8000	34	28	25	22	20	15	14	13

VENTILATING GRILLES, VENTILATING VALVES
 CIRCULAR DIFFUSERS, SQUARE DIFFUSERS
 SWIRL DIFFUSERS, VARIABLE SWIRL DIFFUSERS
 SLOT DIFFUSERS, ROUND DUCT DIFFUSERS
 AIR DISPLACEMENT UNITS
 SUPPLY AIR NOZZLES
 EXTERNAL ELEMENTS
 AIR REGULATION UNITS
 SOUND ATTENUATORS, SOUND ATTENUATING LOUVRES

Pressure drop Δp (Pa) determination table

TYPE: DZ-2; d=100 mm

Attenuator length **L=500**

Air velocity between splitters V_s (m/s)	Distance between attenuation splitters s (mm)							
	30	40	50	60	70	80	90	100
2	3	3	3	2	2	2	2	2
4	10	9	8	7	7	6	6	5
6	26	24	23	21	19	17	16	15
8	45	41	38	34	31	28	26	24
10	69	62	57	50	46	42	39	36
12	99	89	81	72	65	60	56	51
14	134	120	108	96	86	80	74	69
16	174	156	141	125	112	104	97	89
18	218	196	177	157	141	130	121	112
20	270	242	218	193	173	161	149	138

Attenuator length **L=2000**

Air velocity between splitters V_s (m/s)	Distance between attenuation splitters s (mm)							
	30	40	50	60	70	80	90	100
2	7	6	5	4	4	3	3	3
4	22	19	16	13	11	10	9	8
6	53	45	39	33	28	25	22	20
8	90	77	67	55	47	42	38	33
10	140	119	102	84	71	63	57	51
12	201	171	146	120	101	91	82	73
14	272	231	197	162	136	123	110	97
16	354	301	257	211	177	160	143	127
18	447	380	323	266	223	201	180	159
20	552	469	399	328	275	248	222	196

Attenuator length **L=1000**

Air velocity between splitters V_s (m/s)	Distance between attenuation splitters s (mm)							
	30	40	50	60	70	80	90	100
2	5	4	3	3	3	2	2	2
4	14	12	10	9	8	7	6	6
6	34	30	27	24	21	19	18	16
8	58	51	45	39	34	31	29	27
10	89	78	69	59	51	47	44	40
12	128	112	98	84	73	67	62	58
14	173	151	132	112	98	90	84	77
16	224	196	172	146	127	118	109	100
18	283	247	216	184	160	148	137	126
20	349	305	266	226	197	182	168	155

Attenuator length **L=2500**

Air velocity between splitters V_s (m/s)	Distance between attenuation splitters s (mm)							
	30	40	50	60	70	80	90	100
2	8	6	5	4	4	3	3	2
4	25	21	18	14	12	11	9	8
6	59	50	44	36	30	27	24	22
8	103	87	74	61	51	45	41	36
10	159	134	114	93	77	69	62	55
12	229	193	164	133	110	99	89	79
14	311	262	221	179	148	134	120	106
16	406	342	288	233	193	174	156	139
18	511	431	363	294	243	219	197	174
20	631	532	447	362	300	271	243	215

Attenuator length **L=1500**

Air velocity between splitters V_s (m/s)	Distance between attenuation splitters s (mm)							
	30	40	50	60	70	80	90	100
2	6	5	4	4	3	3	3	2
4	17	15	13	11	9	8	8	7
6	43	37	33	28	25	22	20	18
8	74	64	56	47	41	36	33	30
10	114	98	85	71	61	55	50	45
12	164	141	122	102	87	79	72	65
14	223	191	164	137	117	106	97	87
16	290	249	214	179	152	139	126	114
18	366	314	270	225	191	174	158	142
20	451	387	332	277	236	215	195	176

Attenuator length **L=3000**

Air velocity between splitters V_s (m/s)	Distance between attenuation splitters s (mm)							
	30	40	50	60	70	80	90	100
2	9	8	6	5	4	3	3	3
4	29	24	20	16	13	11	10	9
6	66	56	48	39	33	29	26	23
8	116	97	82	66	55	49	44	39
10	179	150	126	101	83	75	67	60
12	258	216	181	145	119	107	97	86
14	350	293	245	196	160	145	130	115
16	457	382	319	255	209	189	170	150
18	577	482	402	321	263	238	213	189
20	713	595	496	396	324	293	263	233



Pressure drop Δp (Pa) determination table

TYPE: DZ-2; d=200 mm

Attenuator length **L=500**

Air velocity between splitters V_s (m/s)	Distance between attenuation splitters s (mm)							
	60	80	100	120	140	160	180	200
2	3	3	2	2	2	2	2	1
4	9	9	8	7	7	6	6	5
6	26	24	21	20	19	17	16	15
8	43	40	34	33	31	28	26	24
10	67	61	52	49	46	42	39	36
12	97	87	74	69	65	60	56	51
14	130	117	98	93	87	80	74	69
16	169	152	128	120	113	104	97	89
18	212	192	160	151	141	131	121	112
20	263	236	197	186	174	161	149	138

Attenuator length **L=1000**

Air velocity between splitters V_s (m/s)	Distance between attenuation splitters s (mm)							
	60	80	100	120	140	160	180	200
2	4	3	3	2	2	2	2	2
4	12	11	9	8	7	7	6	6
6	30	27	24	22	21	18	17	16
8	52	46	39	36	34	30	28	25
10	80	70	58	54	50	46	42	38
12	114	101	83	78	72	65	60	54
14	155	136	111	104	96	87	80	72
16	202	178	145	135	125	114	104	94
18	255	224	182	169	157	143	130	118
20	314	276	224	209	193	176	161	145

Attenuator length **L=1500**

Air velocity between splitters V_s (m/s)	Distance between attenuation splitters s (mm)							
	60	80	100	120	140	160	180	200
2	4	4	3	3	2	2	2	2
4	13	12	10	9	8	7	7	6
6	35	30	26	24	22	20	18	16
8	59	50	42	39	36	33	30	27
10	90	77	64	59	55	49	45	40
12	130	110	91	85	78	71	64	58
14	175	149	122	113	104	95	86	77
16	228	194	159	147	136	123	112	100
18	286	245	200	185	170	155	140	126
20	354	302	246	228	210	191	173	155

Attenuator length **L=2000**

Air velocity between splitters V_s (m/s)	Distance between attenuation splitters s (mm)							
	60	80	100	120	140	160	180	200
2	5	4	3	3	3	2	2	2
4	15	14	10	9	9	8	7	6
6	38	34	27	25	23	21	19	17
8	65	58	45	42	39	34	31	28
10	100	89	68	63	58	52	47	42
12	144	129	97	90	83	75	67	60
14	195	174	131	121	111	100	90	81
16	254	226	170	157	144	131	118	105
18	320	285	214	197	181	164	148	131
20	395	352	263	243	223	202	182	162

Attenuator length **L=2500**

Air velocity between splitters V_s (m/s)	Distance between attenuation splitters s (mm)							
	60	80	100	120	140	160	180	200
2	5	4	3	3	3	2	2	2
4	17	15	11	10	9	8	7	7
6	42	36	29	27	25	22	20	18
8	72	61	48	45	41	36	33	29
10	111	94	73	67	62	55	49	44
12	159	135	104	96	88	79	71	63
14	216	182	140	129	118	106	95	84
16	281	238	182	168	154	138	124	110
18	354	299	229	211	193	174	156	137
20	437	370	283	260	238	214	192	169

Attenuator length **L=3000**

Air velocity between splitters V_s (m/s)	Distance between attenuation splitters s (mm)							
	60	80	100	120	140	160	180	200
2	5	5	3	3	3	3	2	2
4	19	16	12	11	10	9	8	7
6	46	39	32	30	27	24	21	19
8	80	66	54	49	45	40	36	31
10	122	102	81	75	68	61	54	48
12	175	146	117	107	98	87	78	68
14	238	198	157	144	131	117	104	91
16	311	258	204	187	171	153	136	119
18	391	326	257	236	214	192	171	149
20	483	402	317	291	264	237	210	184

By means of pressure drop reducing guides, the pressure drops listed in the table are reduced by 20 %.

VENTILATING GRILLES, VENTILATING VALVES
 CIRCULAR DIFFUSERS, SQUARE DIFFUSERS
 SWIRL DIFFUSERS, VARIABLE SWIRL DIFFUSERS
 SLOT DIFFUSERS, ROUND DUCT DIFFUSERS
 AIR DISPLACEMENT UNITS
 SUPPLY AIR NOZZLES
 EXTERNAL ELEMENTS
 AIR REGULATION UNITS
 SOUND ATTENUATORS, SOUND ATTENUATING LOUVRES

Pressure drop Δp (Pa) determination table

TYPE: DZ-3; d=100 mm

Attenuator length **L=500**

Air velocity between splitters V_s (m/s)	Distance between attenuation splitters s (mm)							
	30	40	50	60	70	80	90	100
2	3	3	2	2	2	2	2	1
4	10	9	8	7	7	6	6	5
6	25	24	24	23	20	17	16	15
8	43	41	40	35	32	29	27	25
10	65	61	58	51	47	42	39	38
12	97	89	83	75	67	62	58	53
14	130	120	112	100	89	83	77	71
16	169	156	145	130	116	108	100	92
18	208	195	184	162	146	134	126	116
20	259	242	227	199	179	167	155	143

Attenuator length **L=2000**

Air velocity between splitters V_s (m/s)	Distance between attenuation splitters s (mm)							
	30	40	50	60	70	80	90	100
2	8	6	6	5	4	3	3	3
4	23	19	18	14	11	10	10	9
6	53	46	41	34	31	26	23	21
8	88	78	70	58	49	46	40	35
10	140	122	107	88	75	67	62	56
12	193	172	154	127	107	97	89	79
14	267	234	206	170	143	132	119	105
16	347	305	269	222	188	170	154	138
18	441	385	337	281	237	215	193	174
20	540	474	417	346	291	265	239	214

Attenuator length **L=1000**

Air velocity between splitters V_s (m/s)	Distance between attenuation splitters s (mm)							
	30	40	50	60	70	80	90	100
2	4	4	3	3	3	2	2	2
4	14	12	10	9	9	7	7	6
6	35	30	27	25	22	20	19	17
8	58	51	46	41	35	33	31	30
10	87	78	71	62	54	50	47	43
12	124	112	102	87	77	72	66	63
14	168	151	137	116	103	96	90	85
16	215	195	178	151	134	125	117	110
18	273	246	223	192	168	157	149	139
20	339	304	274	235	207	194	182	171

Attenuator length **L=2500**

Air velocity between splitters V_s (m/s)	Distance between attenuation splitters s (mm)							
	30	40	50	60	70	80	90	100
2	9	7	7	5	4	4	3	3
4	25	21	20	15	13	12	10	8
6	64	53	46	37	31	28	26	23
8	114	93	77	64	55	49	45	40
10	172	143	120	99	82	74	68	60
12	241	204	174	141	118	107	98	87
14	335	278	232	190	158	144	133	117
16	433	362	304	247	206	188	172	153
18	551	458	382	312	259	235	217	193
20	680	564	469	384	320	293	268	239

Attenuator length **L=1500**

Air velocity between splitters V_s (m/s)	Distance between attenuation splitters s (mm)							
	30	40	50	60	70	80	90	100
2	5	5	4	3	3	3	2	2
4	17	15	13	11	10	9	8	7
6	45	38	33	29	26	23	21	20
8	83	68	57	49	43	37	35	32
10	120	102	88	73	63	58	53	50
12	178	149	126	106	91	83	76	70
14	238	200	169	143	123	112	104	95
16	310	261	221	186	159	147	135	124
18	389	328	278	234	200	184	169	153
20	481	405	342	288	247	249	206	191

Attenuator length **L=3000**

Air velocity between splitters V_s (m/s)	Distance between attenuation splitters s (mm)							
	30	40	50	60	70	80	90	100
2	10	8	6	5	5	4	4	3
4	30	25	20	17	14	12	11	10
6	74	59	48	39	34	30	29	24
8	130	103	82	67	56	50	46	43
10	199	159	128	102	85	77	71	64
12	297	231	181	148	121	112	102	92
14	396	312	247	199	165	151	138	124
16	516	407	322	261	214	196	180	161
18	652	513	405	326	270	248	225	204
20	808	634	499	401	333	305	279	252

Pressure drop Δp (Pa) determination table**TYPE: DZ-3; d=200 mm**Attenuator length **L=500**

Air velocity between splitters V_s (m/s)	Distance between attenuation splitters s (mm)							
	60	80	100	120	140	160	180	200
2	3	3	2	2	2	2	2	1
4	10	9	8	7	7	6	6	5
6	27	24	22	21	20	17	16	15
8	46	40	36	34	32	29	27	25
10	69	60	53	50	47	43	39	37
12	100	87	76	72	67	62	58	53
14	135	117	102	96	90	83	77	71
16	175	152	132	125	117	108	100	92
18	220	191	166	156	146	135	126	116
20	272	236	205	192	180	167	155	143

Attenuator length **L=1000**

Air velocity between splitters V_s (m/s)	Distance between attenuation splitters s (mm)							
	60	80	100	120	140	160	180	200
2	4	3	3	3	3	2	2	2
4	13	11	9	8	8	7	7	6
6	32	27	24	23	22	19	18	17
8	54	46	40	38	35	32	30	28
10	83	70	60	57	53	49	45	41
12	120	101	86	81	76	70	64	59
14	162	136	115	108	101	93	86	79
16	211	177	150	141	132	121	112	103
18	266	223	188	176	165	152	141	130
20	329	275	231	217	203	188	174	160

Attenuator length **L=1500**

Air velocity between splitters V_s (m/s)	Distance between attenuation splitters s (mm)							
	60	80	100	120	140	160	180	200
2	4	3	3	3	3	2	2	2
4	15	12	10	9	9	8	7	6
6	38	31	26	25	23	21	19	18
8	65	53	43	41	38	34	32	29
10	99	80	66	61	57	52	48	44
12	144	116	94	88	82	75	68	62
14	194	156	126	118	109	100	92	84
16	253	203	164	153	142	130	120	109
18	319	256	206	192	178	164	150	136
20	394	316	253	237	220	202	185	168

Attenuator length **L=2000**

Air velocity between splitters V_s (m/s)	Distance between attenuation splitters s (mm)							
	60	80	100	120	140	160	180	200
2	6	4	3	3	3	3	3	2
4	18	14	11	10	9	8	8	7
6	44	35	28	26	25	22	20	18
8	76	59	47	44	41	37	33	30
10	117	91	71	66	61	55	51	46
12	168	130	102	95	88	80	73	65
14	228	176	137	127	117	107	97	88
16	297	229	178	165	153	139	127	114
18	375	289	223	208	192	175	159	143
20	462	356	275	256	236	216	196	177

Attenuator length **L=2500**

Air velocity between splitters V_s (m/s)	Distance between attenuation splitters s (mm)							
	60	80	100	120	140	160	180	200
2	6	5	4	3	3	3	2	2
4	19	15	12	11	10	9	8	7
6	49	38	30	28	26	23	22	19
8	85	65	50	47	44	39	36	32
10	131	100	77	71	66	59	54	48
12	188	143	110	102	94	85	78	69
14	254	193	147	137	126	114	105	93
16	332	252	192	178	164	149	137	121
18	419	318	241	224	206	187	172	152
20	517	392	297	276	254	231	212	188

Attenuator length **L=3000**

Air velocity between splitters V_s (m/s)	Distance between attenuation splitters s (mm)							
	60	80	100	120	140	160	180	200
2	7	5	4	4	4	3	3	3
4	23	17	12	12	11	10	9	8
6	54	41	32	30	28	25	23	20
8	94	70	54	50	46	41	38	34
10	145	108	82	76	70	63	57	51
12	210	156	117	109	100	91	82	73
14	285	211	158	146	135	122	110	98
16	371	275	206	191	175	159	144	128
18	469	347	259	240	220	200	181	161
20	579	428	319	295	271	247	223	199

By means of pressure drop reducing guides, the pressure drops listed in the table are reduced by 20 %.

Computer Program “Klima DZ” for sound attenuators

The “Klima DZ” computer program is a result of a development project aimed at simplifying the task of specification of DZ-2 and DZ-3 sound attenuators. A sound attenuator consists of a duct section and attenuation splitters. It is a multivariable system requiring complex and time-consuming calculation. The “Klima DZ” computer program is a tool suitable for ventilation and air-conditioning system designers. The program outputs the technically optimised attenuator solution based on minimum input data. The “Klima DZ” computer program is designed to run on personal computers, under Windows operating system. The program supports easy and intuitive design process, since all operations are invoked and controlled by the computer mouse. The “Klima DZ” program can be enhanced with a module supporting fully automatic production launching procedure.

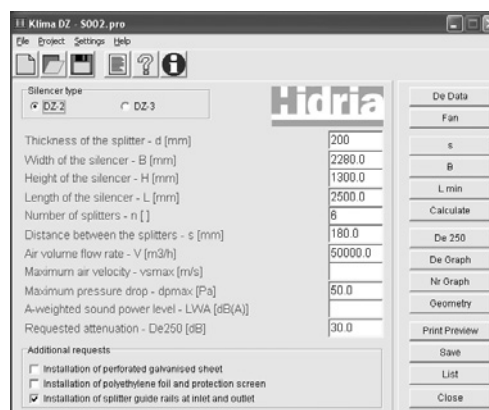


Calculation of DZ-2 and DZ-3 sound attenuators

The DZ-2 attenuator with K-2 splitters provides very efficient attenuation in the 250 Hz octave band. The DZ-3 attenuator with K-3 splitters provides very efficient attenuation in the 500 to 4000 Hz frequency range.

The “Klima DZ” computer program provides the following functions:

- Calculation of attenuator on the basis of minimal input data**
 The user can calculate attenuator with only three input data items: the attenuator type (DZ-2 or DZ-3), thickness of attenuation splitter and air volume flow rate through the attenuator. Usually, the user specifies acoustic requirements in further detail, by entering additional input data. The most important data items are the required attenuation rate at the 250 Hz frequency and the flow noise max. sound power level, L_{WA} .
- Fully automatic calculation of attenuator**
 The “Klima DZ” performs automatic calculation of all those attenuators that meet acoustic requirements specified by input data. For each attenuator, the program outputs dimensions, price and weight, and sorts the results according to the manufacturer’s gross price list - from the cheapest to most expensive attenuator.
- Sound attenuator octave sound spectrum**
 The most common source of noises in ventilation system are fans. The fan sound power level depends mainly on the shape of blades and their number, as well as air volume flow rate and the total pressure head. The rotation of impeller and the turbulence in the air flow passing the blades generate the noise. The “Klima DZ” program allows the user to enter the fan noise spectrum, calculated by adding the total sound power level and the relative sound power level of the fan. The relative sound power level at the attenuator outlet is the difference between the fan sound power spectrum and the silencer attenuation.
- Flow noise sound power level, L_{WA} in dB (A)**
 To bring noise level measurement results to a common basis, the measuring device is fitted with an electronic filter, which evaluates the sound power in different frequency ranges. In accordance with the human ear sensitivity to noise as a function of frequency, the sound power level frequency curve is pondered with the correction curve A and expressed in dB (A). The “Klima DZ” program allows the user to enter the flow noise max. sound power level L_{WA} in dB (A), as a criterion to be used in the calculation of attenuator.
- Selection of the cost optimal solution**
 The AUTO function performs automatic calculation of all attenuators, which meet acoustic requirements specified by input data. For each attenuator, the program outputs dimensions, price and weight, and sorts the results according to the manufacturer’s gross price list.
- Graphical presentation of results**
 The “Klima DZ” program offers the user a graphical presentation of attenuation and flow noise power level calculations, in the form of an octave spectrum chart. The program further offers text and graphical result storage by use of templates, and printout.



Calculation of a Sound Attenuator with the “Klima DZ” Computer Program (Example printout)

Silencer calculation

Project (project.pro)		Input data	
Name		Type	DZ-2
Customer		d [mm]	200
Reference		V [m³/h]	5000
Designed by		v _{smax} [m/s]	
Information		dp _{max} [Pa]	50.0
		L _{WA} [dB(A)]	
		De63 [dB]	
		De125 [dB]	
		De250 [dB]	
		De500 [dB]	
		De1000 [dB]	
		De2000 [dB]	
		De4000 [dB]	
		De8000 [dB]	

Attenuation	
f [Hz]	De [dB]
63	5
125	12
250	22
500	26
1000	24
2000	20
4000	17
8000	14

Air flow noise	
f [Hz]	L _w [dB]
63	46
125	31
250	28
500	30
1000	27
2000	21
4000	17
8000	20

Attenuation at f=250Hz	
De [dB]	22
vs [m/s]	7.2
dp [Pa]	38.7
V [m³/h]	5000
L _{WA} [dB(A)]	32

Additional requests	
Perforated galvanised sheet	
Polyethylene foil and protection screen	
Splitter guide rails at inlet and outlet	

Key	
DZ-2 / 200 / 3	840x800x1000

Klima DZ 3.0 / P3015012005
© Hidria MP Klima

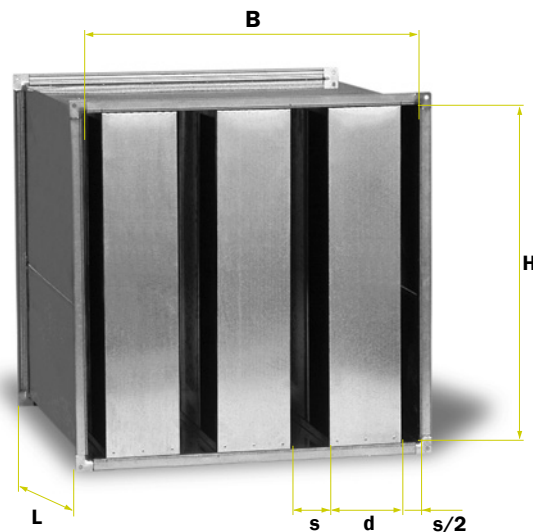
Calculation of a sound attenuator

The DZ-2 and DZ-3 type sound attenuators are designed for attenuation of fan noise in ventilation and air-conditioning systems. A sound attenuator is a multivariable system, determined by the following data:

- attenuator width **B**
- attenuator height **H**
- attenuator length **L**
- thickness of attenuation splitter **d**
- distance between attenuation splitters **s**
- number of attenuation splitters **n**

When specifying a sound attenuator, the user has to comply with acoustic requirements of the ventilation and air-conditioning systems:

- required attenuation, defined as the difference between the fan sound power level spectrum and the sum of the duct system inherent attenuation and the permissible room noise level
- air volume flow rate
- max. air velocity across the splitters
- max. pressure drop over the attenuator
- max. flow noise sound power level (L_{WA} in dB (A))
- attenuator's own air flow noise level, generated by the air stream through the splitters; in each octave, this level should be lower than the attenuated fan noise measured at the attenuator outlet



The “Klima DZ” program allows the calculation of attenuator using the following data:

- attenuator type: DZ-2 ali DZ-3
- attenuation splitter thickness:
 - d=100 mm
 - d=200 mm
- attenuator width:
 - for d=100 mm from B=130 mm to B=1600 mm
 - for d=200 mm from B=260 mm to B=3200 mm
- attenuator height:
 - for d=100 mm from H=300 mm to H=1200 mm
 - for d=200 mm from H=300 mm to H=1800 mm
- attenuator length:
 - from L=500 mm to L=3000 mm

The attenuator length shall be a multiple of 250 mm, ranging from L=500 mm to L=3000 mm.

- Distance between attenuation splitters:
 - for d=100 mm from s=30 mm to s=100 mm
 - for d=200 mm from s=60 mm to s=200 mm
- number of attenuation splitters:
 - from n=1 to n=8
- air volume flow rate through the attenuator:
 - for d=100 mm from V=400 m³/h to V=12000 m³/h
 - for d=200 mm from V=1000 m³/h to V=100000 m³/h

The air volume flow rate range is derived from a database providing data on air volume flow rates through the attenuator. In addition, the “Klima DZ” program allows the users to calculate air velocity based on the effective free area; such a calculation can accommodate the cases where the air volume flow rate is outside the air flow database range.

- air velocity between splitters:
 - from $v_s=4$ m/s to $v_s=20$ m/s

Input data	
Type	DZ-2
d [mm]	200
V [m ³ /h]	5000
vsmax [m/s]	
dpmax [Pa]	50.0
LwA [dB(A)]	
De63 [dB]	
De125 [dB]	
De250 [dB]	
De500 [dB]	
De1000 [dB]	
De2000 [dB]	
De4000 [dB]	
De8000 [dB]	

Air flow noise	
f [Hz]	Lw [dB]
63	46
125	31
250	28
500	30
1000	27
2000	21
4000	17
8000	20

Attenuation at f=250Hz	
De [dB]	22
vs [m/s]	7.2
dp [Pa]	38.7
V [m ³ /h]	5000
LwA [dB(A)]	32

Attenuation	
f [Hz]	De [dB]
63	5
125	12
250	22
500	26
1000	24
2000	20
4000	17
8000	14

SOUND ATTENUATORS, SOUND ATTENUATING LOUVRES
 AIR REGULATION UNITS
 EXTERNAL ELEMENTS
 SUPPLY AIR NOZZLES
 AIR DISPLACEMENT UNITS
 SLOT DIFFUSERS, ROUND DUCT DIFFUSERS
 SWIRL DIFFUSERS, VARIABLE SWIRL DIFFUSERS
 CIRCULAR DIFFUSERS, SQUARE DIFFUSERS
 VENTILATING GRILLES, VENTILATING VALVES

Round sound attenuators ODZ-1

Application

ODZ-1 round sound attenuators field of application is the attenuation of fan noise in ventilation and air-conditioning systems. They are best suited for installation in either inlet or outlet pipes of axial fans, in inlet pipes of radial fans, or installation in circular cross-section ducts.

Description

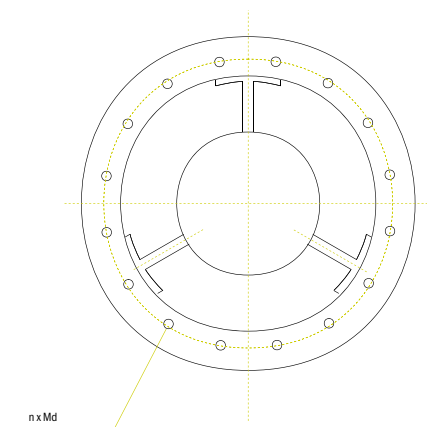
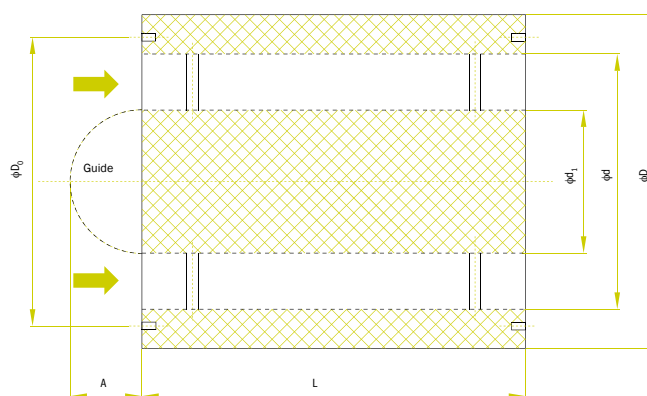
Round sound attenuators consist of the following components: casing shell, mineral wool filling, inner shell and centrally mounted damping core. The casing shell is made of galvanised sheet steel. The attenuator inner shell, which is exposed to the air flow, is made of perforated galvanised sheet steel. A suitable foil, laid between the shell and mineral wool filling, protects wool fibres against erosion by air stream. The attenuator core is made of perforated galvanised sheet steel, protection cellulose foil and core filling of mineral wool. The attenuator ends are fitted with welded-on nuts for the attachment of connecting ducts. In case the ODZ-1 sound attenuator is to be installed in the inlet pipe of the fan (centrifugal or axial), its core should be fitted with aerodynamically shaped V-type guides. The core version with guides is to be specified explicitly when placing an order.

Dimensions

The sound attenuator range of nominal diameters, indicating the inner shell diameters, corresponds to the standardised DIN 24 154 series. The same applies to the range of division circle diameters ΦD_0 and dimensions of mounting bores $n \times M d$. The ratio of the core diameter to the inner attenuator shell diameter, $\Phi d_1 / \Phi d = 0,63$, hence the attenuator effective area is approximately 60 %. The ratio of the attenuator length L to its diameter d_N is:

$$\frac{L}{d_N} \approx 1.5$$

Nominal sizes Φd_N	Dimensions						
	Φd	ΦD	L	Φd_1	ΦD_0	$n \times M d$	$\approx A$
400	402	605	630	254	438	12xM8	127
450	451	655	710	288	487		143
500	505	713	800	320	541		160
560	567	775	900	359	605	16xM10	180
630	636	840	930	402	674		200
710	713	920	1120	451	751		225
800	799	1005	1250	505	837	24xM10	252
900	896	1100	1400	567	934		284
1000	1005	1210	1600	636	1067	24xM12	318
1120	1128	1335	1800	713	1200	32xM16	356
1250	1265	1470	1930	799	1337		400



Determination of adequate attenuator

The attenuator is selected by means of diagrams, in the following way:

1. First, the required attenuation D is determined. This attenuation D is the difference between the fan sound power spectrum and the sum of the ventilation system inherent attenuation and the permitted noise level in the room or environment.
2. ODZ-1 attenuators sound attenuation capacities are given in Diagram 1. If the required attenuation exceeds the value achievable with attenuators of standard lengths, several attenuators of the same diameter may be installed in series. In such a case, attenuators are connected with suitable tube elements. Attenuation capacities have been measured in the IMP company in-house acoustic laboratory.
3. The air pressure drops across attenuators are given, as a function of the nominal diameter and the air volume flow rate, in Diagram 2.
4. The air flow noise levels, generated by the air stream through the attenuator, are given in Diagram 3. The figures apply to the attenuator nominal size $\Phi d_N=630$ mm. For other sizes, the following correction table shall be considered for each octave band:

Nominal size Φd_N	400	450	500	560	630	710
Correction (dB)	-4	-3	-2	-1	0	+1

Nominal size Φd_N	800	900	1000	1120	1250
Correction (dB)	+2	+3	+4	+5	+6

In the above procedure, the designer shall observe the requirement that, in each octave, the air flow noise level shall be 10 dB (A) lower than the attenuated fan noise level behind the silencer.

Ordering details

An order shall specify the designation, nominal diameter and quantity. Since a standard attenuator length L is assigned to each nominal diameter d_N , the attenuator length needs not to be specified in the order. In the case the attenuator core is to be fitted with guides (for installation into the fan inlet pipe), the letter "V" shall be appended to the designation in the order.

Ordering key

ODZ-1 / V $d_n=630$ mm

d_n Nominal diameter

V Fitted with guides

ODZ-1 Round sound attenuator

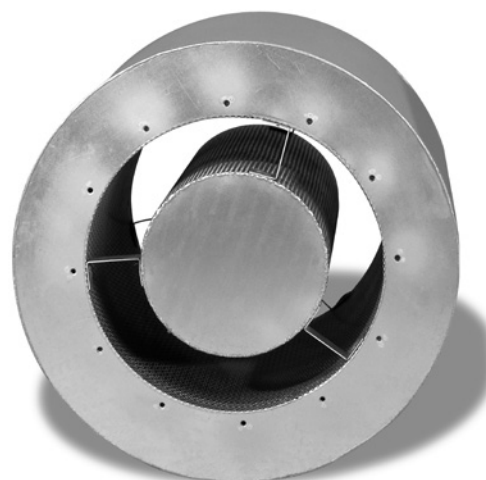
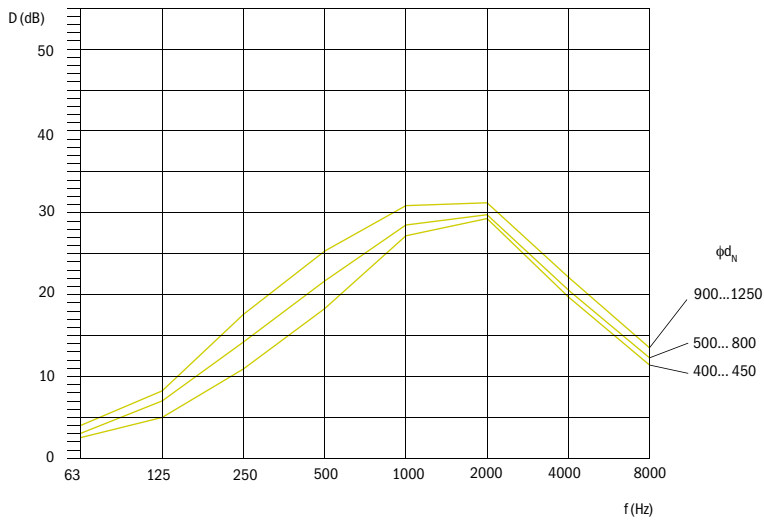


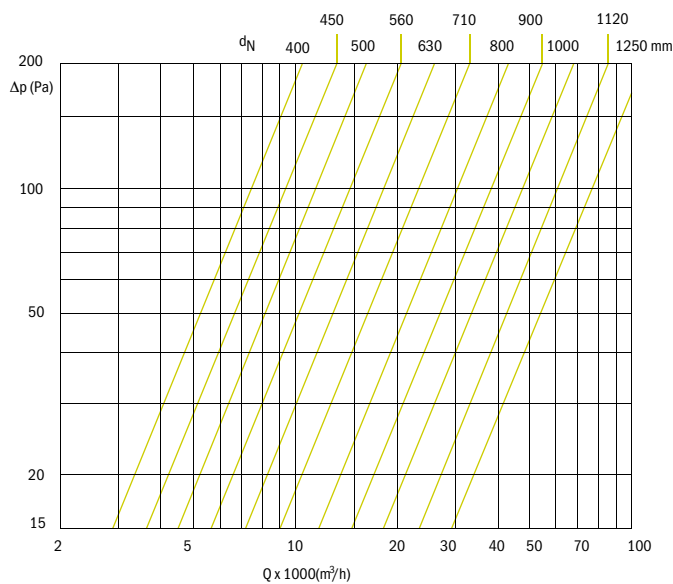
Diagram 1: Attenuation capacities



Definition of symbols

f (Hz) Frequency
D (dB(A)) Attenuation

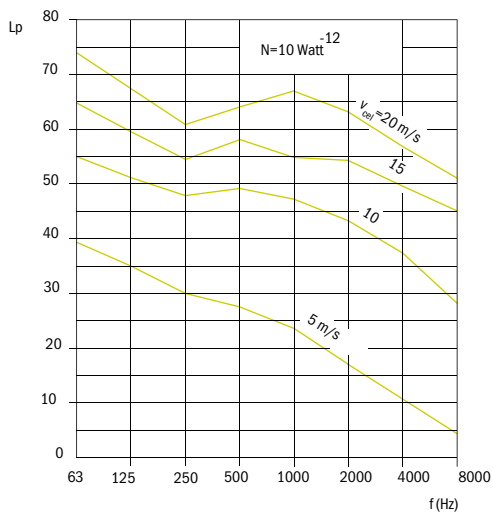
Diagram 2: Pressure drops across attenuator



Definition of symbols

d_N (mm) Nominal diameter
Δp (Pa) Pressure drop across attenuator
Q (m³/h) Air volume flow rate

Diagram 3: Air flow noise levels



Definition of symbols

f (Hz) Frequency
D (dB(A)) Attenuation

Air velocities are given as a function of the total effective area.

$$A_{ef} = \frac{\pi d^2}{4}$$

Round sound attenuators MDZ-50

Application

Ventilation or air-conditioning system commonly supply air to several rooms, which are then acoustically connected through the duct network (like by telephone). Such cross-connection can considerably impair sound insulation between the rooms. Such "telephony" is obviously not desirable should be prevented or reduced by means of circular attenuators (cross-talk attenuators). Two examples of such offensive noises are speech or music from the neighbouring room. Typical application examples include: attenuation of noises between offices, parlours, hospital rooms, laboratories, music classrooms, consulting rooms, kitchens, bathrooms, toilets etc.

Round sound attenuators can also act as supplementary fan noise attenuators, in the cases where the attenuation capacity of the primary attenuator in the machine room is not adequate.

Description

Round attenuators MDZ-50 consist of the following components: casing shell, mineral wool filling and inner shell. The casing shell is made of galvanised sheet steel. The attenuator inner shell, which is exposed to the air stream, is made of perforated galvanised sheet steel. A suitable foil, laid between the shell and mineral wool filling, protects wool fibres against erosion by air stream.

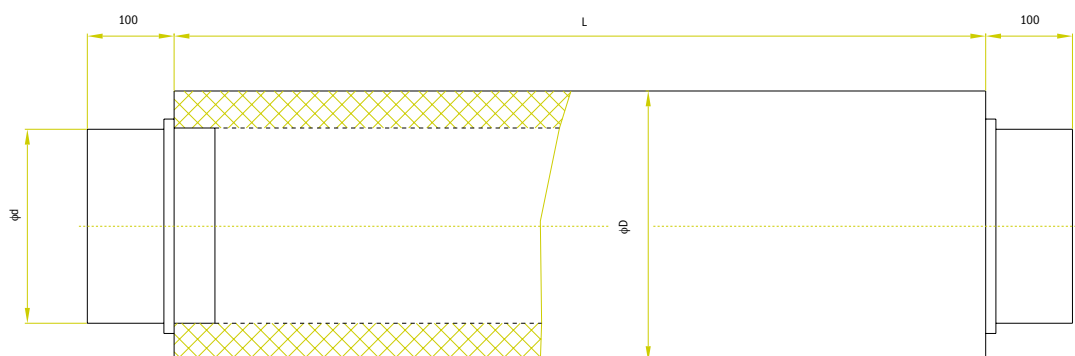
Dimensions

The round attenuators connecting diameters d_N are selected according to DIN 24 154.

The attenuators are manufactured in lengths $L = 450, 950, 1450$ and 1950 mm. The length of the two mounting extensions is 100 mm.



Nominal sizes $\Phi d_N / \Phi D_N$	Dimensions	
	Φd	ΦD
80/180	78	183
100/200	98	203
125/225	123	228
150/250	148	253
160/260	158	263
180/280	178	283
200/300	198	303
224/324	222	327
250/350	248	353
260/360	258	363
280/380	278	383
300/400	298	403
315/415	313	418
355/455	353	458
400/500	398	503



Installation

Two methods are available for the installation of circular attenuators:

- a)** installation in the main duct, suitable in the cases where this duct passes through all rooms and has no side branch connections.
 - b)** installation in the branch of the main duct
- Installation method **a)**, with a single duct passing through all rooms, is suitable for smaller systems. Due to different air flow rates, attenuators of different diameters are to be applied commonly. Pressure drops across attenuators are accumulating, and should therefore be as small as possible. Since each silencer has to provide, by itself, the total required attenuation between two rooms, attenuators can be of considerable lengths.

The installation method **b)** is characterised by the fact that two attenuators are installed between each two rooms, and consequently, they are considerably shorter than in the case of the installation method a). The diameters of connecting extensions can usually be kept equal. Pressure drops across attenuators do not accumulate.

Calculation of required attenuation for MDZ-50

In determining the sound attenuation the following two criteria shall be considered:

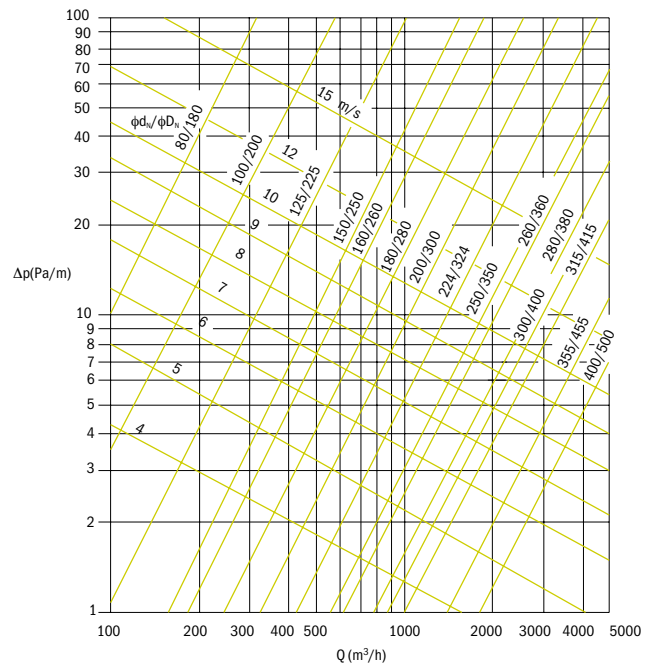
- 1.** Primary criterion considers the sound insulation of the separation wall between two rooms:
Round attenuators shall provide such attenuation capacity that the total duct sound attenuation rate is equal to or higher than the separation wall sound insulation capacity R. This rule shall be observed in all frequency ranges.
- 2.** In addition to the primary criterion described under 1. in certain cases, the designer shall dimension the circular attenuator so as to contribute to attenuation of the fan noise propagating from the engine room. The calculation of required attenuation according to criterion 2. follows the established methods of specifying attenuators in air-conditioning engineering.

Dimensioning of a MDZ-50 sound attenuator

- a)** The attenuator inner diameter is determined, with regard to the specified air flow rate and the selected air velocity or permissible pressure drop, from the diagram.
 - b)** The attenuator length is determined by dividing the required attenuation with the attenuation capacity per meter length.
- The attenuation capacities, in dB / m, of our attenuator range, measured in our acoustic laboratory, are given in the diagram.

The level of flow noise, generated by the air flow through the attenuator, shall be considered as well. In each octave, the air flow noise level shall be lower by 10 dB of the attenuated fan noise behind the silencer. Air flow noise data are available in general literature on circular ducts.

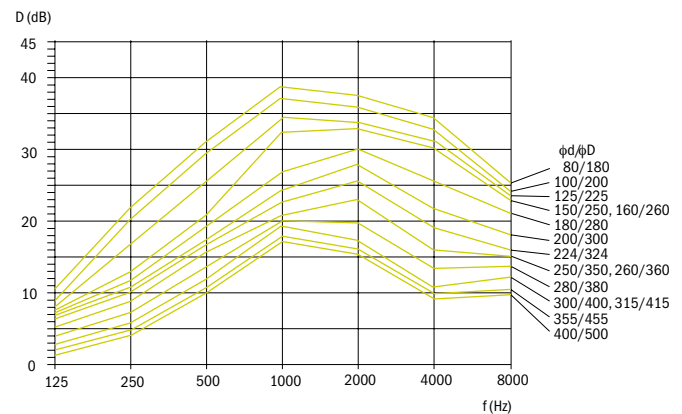
Pressure drops across the attenuator



Definition of symbols

- d_N (mm)** Connecting diameter
- Δp (Pa/m)** Pressure drop in the attenuator
- v (m/s)** Air velocity
- Q (m³/h)** Air flow velocity

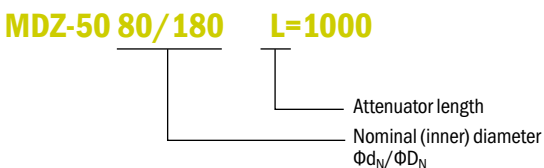
Attenuation capacities



Definition of symbols

- f (Hz)** Frequency
- D (dB(A))** Attenuation

Ordering key



Sound attenuating louvres

Steel attenuating louvre JAR

Application

Steel sound attenuating louvres JAR are designed to prevent ingress of outside noises into the building interior through supply and exhaust opening, and propagation of noise in the opposite direction. In addition to this noise attenuation function, the louvres provide all the protection functions of conventional steel or aluminium louvres - protection against ingress of rain, birds, larger insects etc. Recommended max. effective air velocity is up to 5 m/s.

Description

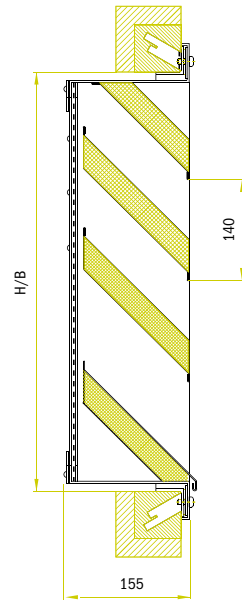
A sound attenuating louvre consists of a supporting frame and horizontal blades. Blades are made of sandwich sections with sound attenuating filling. The frame and blades are made of galvanised sheet steel. A screen made of galvanised wire is attached to the back of the acoustic louvre. On customer's request, acoustic louvres can be powder painted in any colour according to the RAL colour scale.

Dimensions

Within the range of widths B1 and heights H1 listed in the table, all combinations of widths and heights are available.

Free sectional area A_{ef} (m²) calculation

$$A_{ef}(m^2) = B1 \times (H1 - 160 - (55 \times \text{no. of blades}))$$



B1	400	600	800	1000	1200	1400	1600	1800	2000	-	-	-
H1	375	515	655	795	935	1075	1215	1355	1495	1635	1775	1915
Number of blades	2	3	4	5	6	7	8	9	10	11	12	13
Free section area A_{ef} (m ²)	0.0312	0.0702	0.1248	0.1950	0.2808	0.3822	0.4992	0.6318	0.7800	-	-	-

Note: The spacing between individual louvres is 140 mm, valid for all standard dimensions (sizes). For non-standard dimensions (sizes) defined by the required technical characteristics.

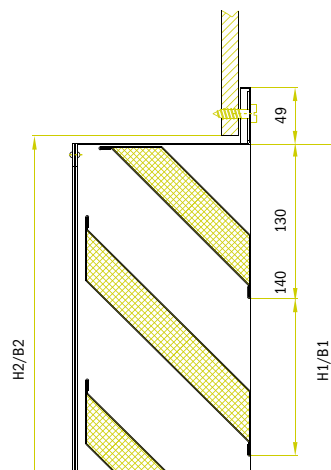
Installation methods

JAR

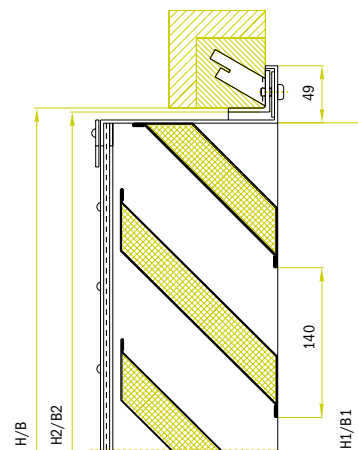
Sound attenuating louvre is fixed by means of screws, directly onto the wall or into the steel construction. Designation: **JAR**.

JAR/3

Sound attenuating louvre is screwed into a galvanised sheet steel frame, designed for building into the surrounding wall structure by means of welded mounting anchors. Designation: **JAR/3**



JAR

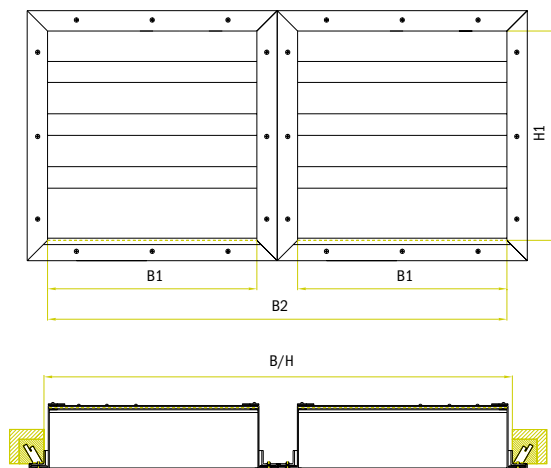


JAR/3

Combining of standard dimensions into larger blocks:

1. Combining in width:

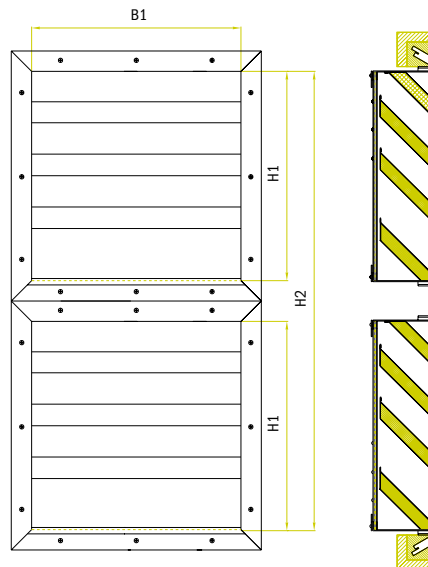
Max. width B2 = 4098 mm
Max. height H1 = 1915 mm



$$B2 = 2B1 + 98$$

2. Combining in height:

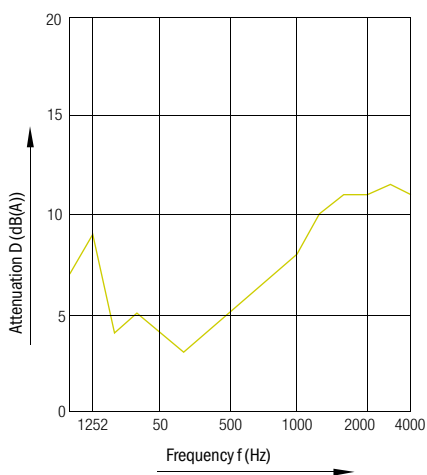
Max. width B1 = 2000 mm
Max. height H2 = 4088 mm



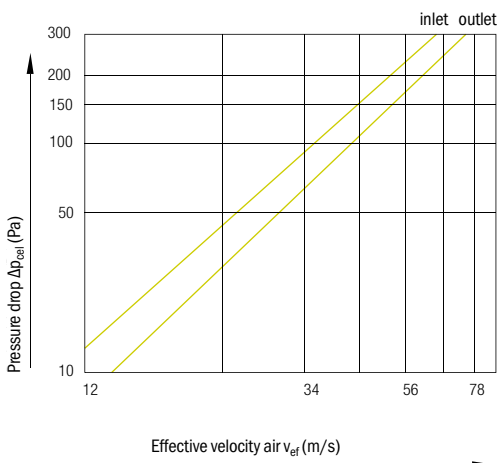
$$H2 = 2H1 + 98$$

Attenuation capacities D(dB)

Measured by the ZAG Institute in Ljubljana, in accordance with SIST EN ISO 140/3 "ACOUSTICS - Measurement of Acoustic Insulation Characteristics of Buildings and Building Construction Elements - Part 3: Laboratory Measurement of Air Propagated Noise Insulation Characteristics of Building Construction Elements"



Pressure drop diagram



Ordering example

Steel attenuating louvre: **JAR**
Size: **B1 = 1000 H1 = 655**
Pcs: **5**

SOUND ATTENUATORS, SOUND ATTENUATING LOUVRES	AIR REGULATION UNITS	EXTERNAL ELEMENTS	SUPPLY AIR NOZZLES	AIR DISPLACEMENT UNITS	SLOT DIFFUSERS, ROUND DUCT DIFFUSERS	SWIRL DIFFUSERS, VARIABLE SWIRL DIFFUSERS	CIRCULAR DIFFUSERS, SQUARE DIFFUSERS	VENTILATING GRILLES, VENTILATING VALVES
----------------------------------------------------	----------------------	-------------------	--------------------	---------------------------	-----------------------------------------	----------------------------------------------	-----------------------------------------	--------------------------------------------